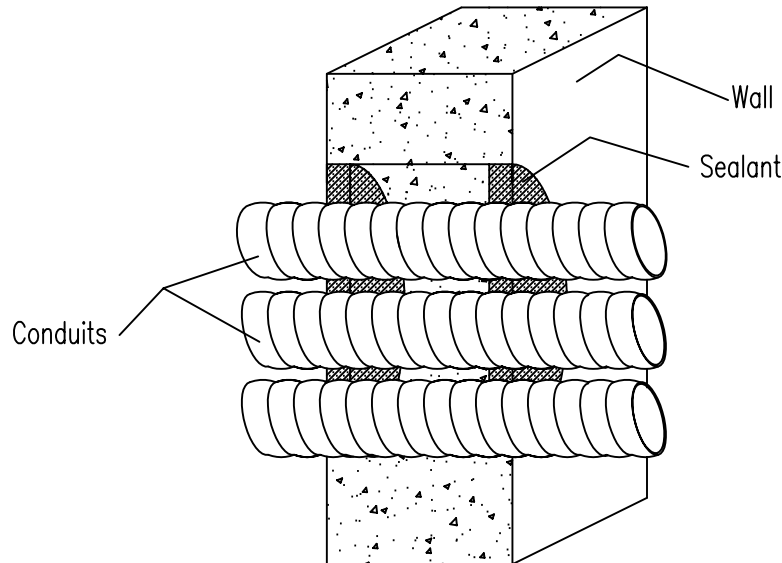


CONCRETE WALL MULTIPLE FLEXIBLE METALLIC CONDUITS

F Rating 2 Hr.

T Rating 0 Hr.



- WALL ASSEMBLY – Min. 6” thick reinforced lightweight or normal weight concrete wall or CMU block wall. Max. diameter of opening is 6”.
- FLEXIBLE METALLIC CONDUITS – One or more 1-1/2” diameter, or smaller steel, flexible metallic conduits. Max. diameter of through penetrant bundle shall be 4”. Annular space between penetrants is 0” (point of contact) to 1/4”. The annular space between the through penetrants and periphery of opening shall be min. 0” (point of contact) to 2”.
- NELSON ES1399 SEALANT – Apply sealant over the forming material to fill the annular space to a min. 5/8” depth. Apply flush with both surfaces of the wall. At point of contact, a min. 3/8” diameter bead of sealant shall be applied at the concrete/through penetrant interface on both surfaces of the wall. Additional sealant shall be forced into interstices of through penetrants to max. extent possible.

Tested in accordance with:
ASTM E-814
ANSI/UL 1479



**System No.
W-J-1162**

Nelson Firestop

DWG NO. FS-0520 R0

DATE: 01/05/04

BY: RL

Project Name: _____
Address: _____

Installer: _____
Address: _____

Signature: _____

Nelson Firestop

800 331-7325 Fax: 918 627-2941

Tulsa, Ok.